

Tlicho Unicode Fonts

By Luke Williams, for the Tlicho Government, and Global Storm IT Corporation

Chris Harveys site, where the Tlicho Fonts came from: www.languagegeek.com

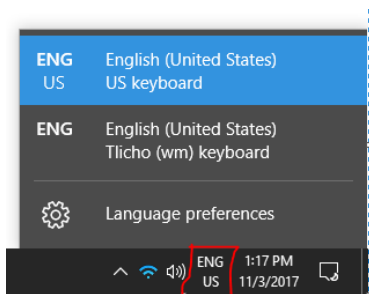
Jim Stauffers site - has keyman/winmac to unicode converter: denefont.com

Installation

Unzip the TlichoFonts.zip file to a folder, then go into it and run either [setup.exe](#), or [wm_tlich_amd64.msi](#):

Name	Date modified	Type	Size
amd64	11/3/2017 12:52 PM	File folder	
i386	11/3/2017 12:52 PM	File folder	
ia64	11/3/2017 12:52 PM	File folder	
wow64	11/3/2017 12:52 PM	File folder	
setup.exe	3/12/2010 6:02 AM	Application	140 KB
wmtlich_amd64.msi	3/12/2010 6:02 AM	Windows Installer ...	112 KB
wmtlich_i386.msi	3/12/2010 6:02 AM	Windows Installer ...	112 KB
wmtlich_ia64.msi	3/12/2010 6:02 AM	Windows Installer ...	112 KB

Click through any installer prompts, and it will install and automatically add the Tlicho (wm) keyboard to the current user account. You will see it in the bottom right corner of the screen:

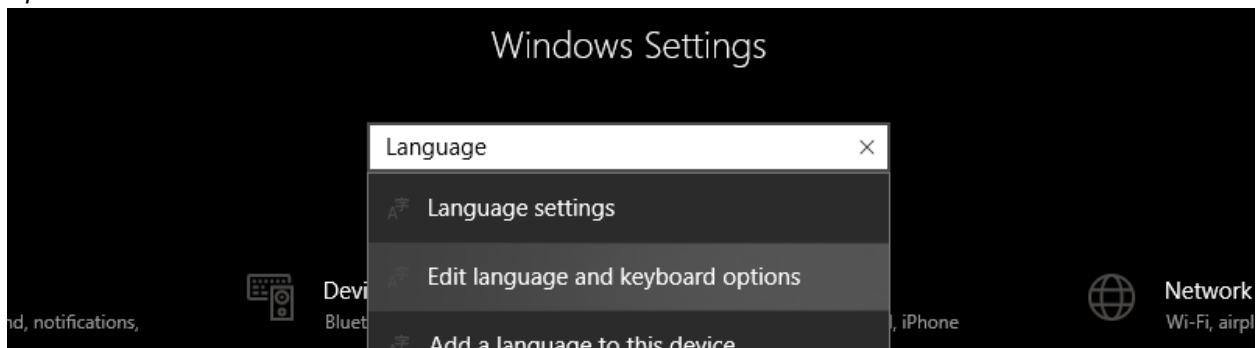


Configuration

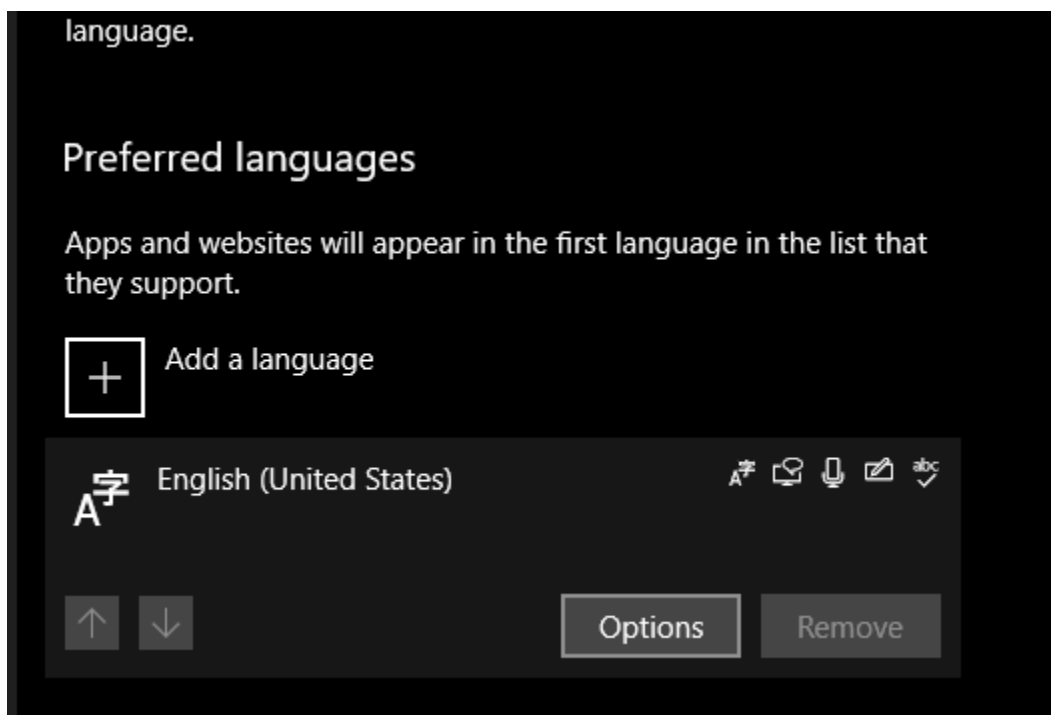
The installer adds the Tlichio (wm) keyboard automatically, but only for the current user. If you do not see it, then you can add it manually.

Windows 10

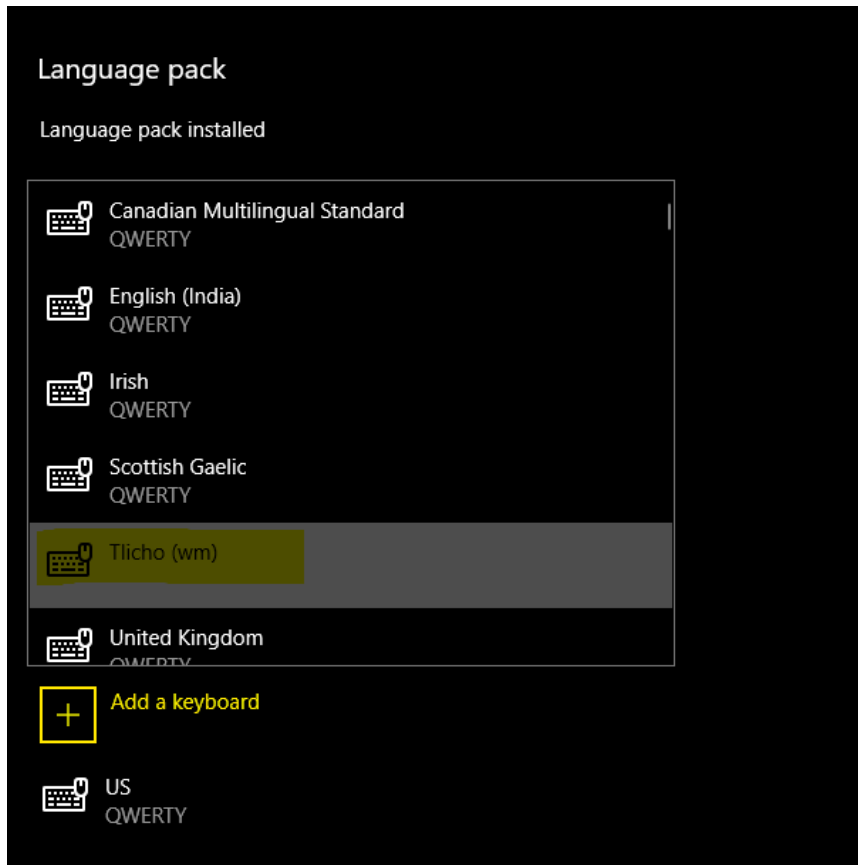
If you do not already see the keyboard in the bottom righthand corner, then it needs to be added manually. Go to Settings, type 'Language' into the search bar, and select 'Edit Language and Keyboard Options':



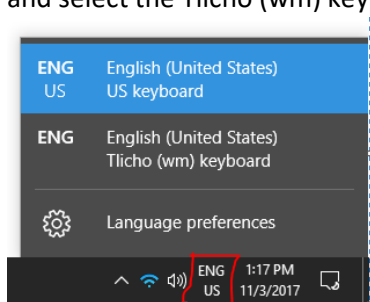
In the next screen, under Preferred Languages, click on your default language. It will either be at the top of the list, or it will be the only one listed. Click on it, then Click on Options:



In the next screen, under Keyboards at the bottom, click on Add a keyboard, and click on Tlicho (wm):

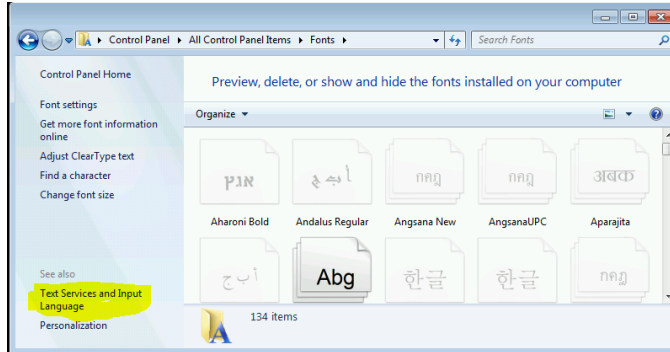


You should now be able to select the keyboard in the bottom righthand corner. Click to open the menu, and select the Tlicho (wm) keyboard:

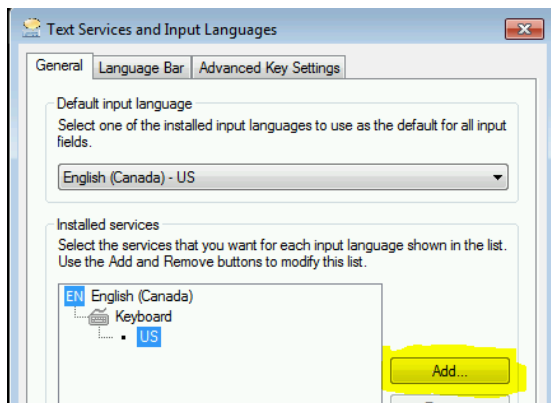


Windows 7

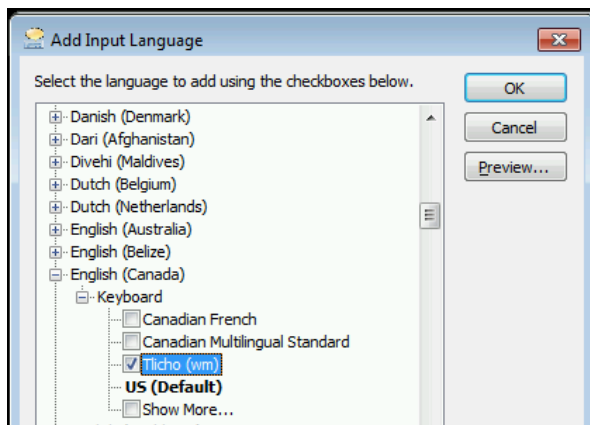
Go to Control Panel -> Fonts -> Text services and input languages:



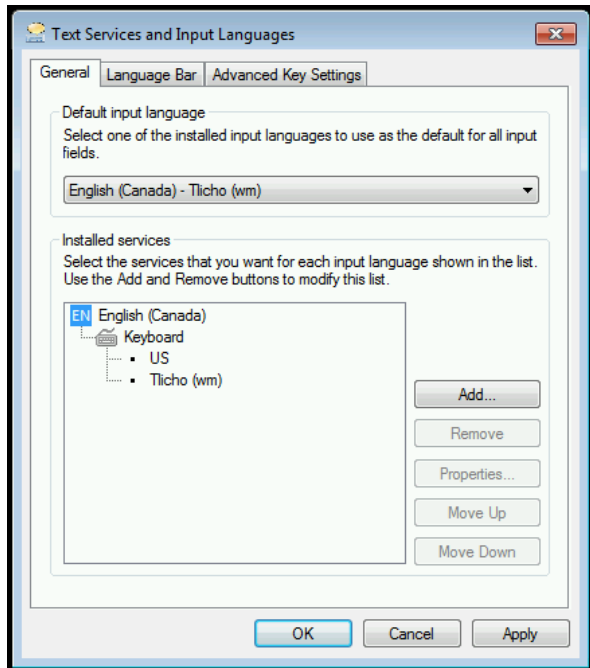
Remove any unnecessary keyboards. Click on English (United States), Click Add:



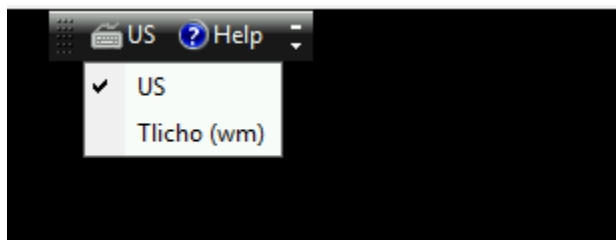
In the Add Input Language popup, go to English (Canada) -> Keyboard, and select Tlcho(wm), and hit OK:



Both languages will now be listed under your Keyboard. Set the default language accordingly, then hit Apply and OK:



A keyboard selector will pop up at the top right side of the screen, where you can change keyboards:



Test to see if the keyboard is working

Open up Word, Notepad, or other software, and change to the Tlcho (wm) keyboard. Note that sometimes these keyboard settings are application specific, ie if you change keyboards in one program, you may need to change it again, when switching to another program.

Numbers 4-8 above the QWERTY keys are modifiers. To test if the keyboard is working, type a letter, and then one of the modifier numbers. You will see the letter get modified:

